

Extra Benefits

As a member of Health Net Ruby Select (HMO), you get all of these extra benefits included with your plan. Most of these benefits are not covered by Original Medicare and not always offered by other health plans.

Take a look at the next few pages to see what Health Net Ruby Select (HMO) has to offer!

You can also contact us or our partners with questions or for more information about these services.



See your Evidence of Coverage for a complete description of plan benefits, exclusions, limitations and conditions of coverage. Plan features and availability may vary by service area.

Dental Services

Keep smiling! Dental benefits made easy!

This Health Net Ruby Select (HMO) plan offers coverage for hundreds of dental procedures, including many preventive and comprehensive procedures at low or no copayment. With access to care through a large dental network, this plan offers affordable, flexible, quality dental coverage.

As a member of Health Net Ruby Select (HMO) you will enjoy benefits like:

Convenient services

- Access plan information online
- Local professional care

Budget-friendly costs

With your Health Net Ruby Select (HMO) dental benefit there are no surprises. You'll know your copayments, and your out-of-pocket costs are clearly defined before any treatment begins.

Preventive Services:

- Oral exams: \$0 copay
- Cleanings: \$0 copay
- Fluoride Treatment: \$0 copay
- Dental X-Rays: \$0 copay

Comprehensive Services:

- Non-routine services: \$0 copay
- Diagnostic services: \$0 - \$15 copay
- Restorative services: \$0 - \$300 copay
- Endodontic services: \$5 - \$275 copay
- Periodontics: \$0 - \$375 copay
- Extractions: \$15 - \$150 copay
- Prosthodontics: \$0 - \$2,250 copay

You can call for a full list of covered benefits.

Find out more information by calling 1-866-249-2382 (TTY: 711) 7:00 a.m.–10:00 p.m. Central Time, Monday–Friday, or visit yourdentalplan.com/healthnet.

» Hearing Care Solutions Program

Did you know you have access to hearing coverage too?

As a Health Net Ruby Select (HMO) member you will receive the following benefits:

- Routine hearing exam at No Charge
- Hearing aid evaluation at No Charge
- A wide selection of fully digital instruments

Hearing aids (all sizes and styles) – Limited to 2 hearing aids total (1 per ear, per calendar year).

Technology Level 1 You pay a \$0 copay per hearing aid	<ul style="list-style-type: none"> • Up to 12 channels • Up to 3 programs • Good for viewing television 	<ul style="list-style-type: none"> • Basic technology to improve hearing in quiet environments with minimal noise • Good for one on one conversations
Technology Level 2 You pay a \$475 copay per hearing aid	<ul style="list-style-type: none"> • Up to 16 channels • Up to 4 programs 	<ul style="list-style-type: none"> • Good technology for speech understanding in low noise environments • Good sound quality
Technology Level 3 You pay a \$595 copay per hearing aid	<ul style="list-style-type: none"> • Up to 48 channels • Up to 6 programs • Automatic function • Rechargeable with charger included* 	<ul style="list-style-type: none"> • Superior technology for speech understanding in moderate noise environments • Superior sound quality • Direct connectivity to iPhone*
Technology Level 4 You pay a \$800 copay per hearing aid	<ul style="list-style-type: none"> • Up to 48 channels • Up to 6 programs • Automatic function • Rechargeable with charger included* 	<ul style="list-style-type: none"> • Advanced technology for speech understanding in many environments • Direct connectivity to iPhone* • Advanced sound quality
Technology Level 5 You pay a \$1,350 copay per hearing aid	<ul style="list-style-type: none"> • Up to 48 channels • Up to 6 programs • Automatic function • Rechargeable with charger included* 	<ul style="list-style-type: none"> • Premium technology for speech understanding in many environments • Direct connectivity to iPhone* • Premium sound quality

* Certain features may only be available on some models.

Call to schedule your hearing exam! 1-866-344-7756 (TTY: 711) 6:00 a.m.–6:00 p.m. Mountain Time, Monday–Friday.



Transportation Services

Need a ride?

Health Net Ruby Select (HMO) offers enrolled members transportation coverage to the doctor and other medically approved appointments for \$0 copay!

Benefits include:

- Curb to curb transportation to plan-approved locations
- Taxi, wheelchair vans and other modes of transportation to meet people's physical needs
- 40 one-way trips are covered to plan-approved locations per calendar year. Mileage limits may apply.

Please make a reservation at least 72 hours in advance by calling 1-877-718-4201 (TTY: 1-866-288-3133) from 8 a.m. – 6 p.m. (local time), Monday – Friday. If a need arises within the 72 hour advanced notice, please call to see if you can be accommodated.





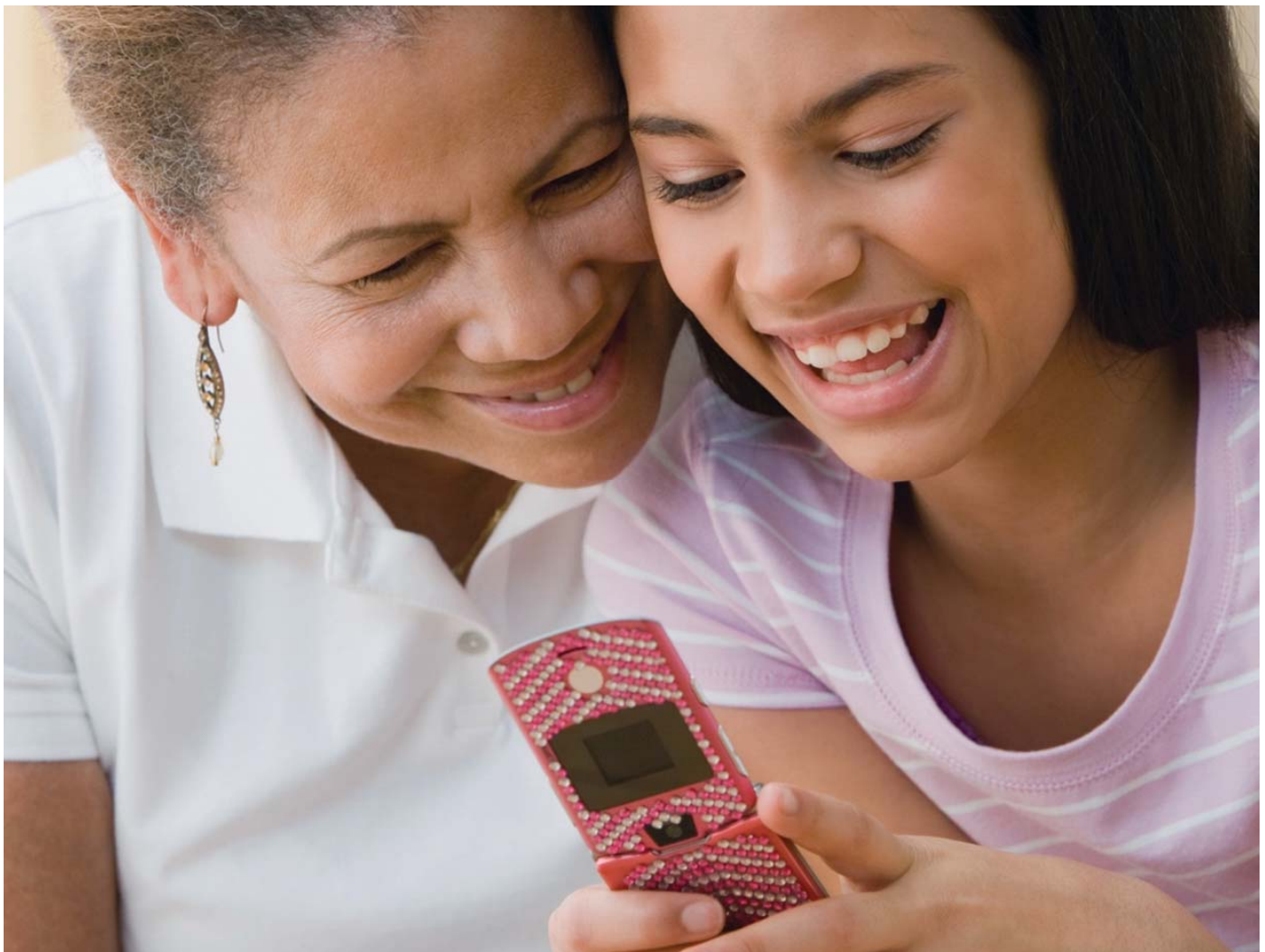
24-Hour Nurse Connect

Let our nurses help you when you have questions about health concerns or need health information.

The nurse advice line is available to any member of Health Net Ruby Select (HMO). The call is free and easy. A caring nurse will listen to your health problem and can help you decide the following:

- If you need to see a doctor
- If it is safe to wait or if you need care right away
- What to do if your symptoms get worse
- What you can start doing at home to feel better

You can call the nurse advice line 24 hours a day, 365 days a year. Refer to the phone number on your health plan member ID card.



Do you need an eye exam or eyewear?

Eye benefits made easy!

Members enrolled in Health Net Ruby Select (HMO) are entitled to the following:

- One routine (non-Medicare covered) eye exam every calendar year.
- Two routine eyewear purchase every 2 calendar years, limited to two set of frames and two pair of eyeglass lenses or contact lenses (in lieu of eyeglass lenses and frames).
- \$450 max allowance for eyeglass frames (or contact lenses in lieu of frames) every 2 years.
- \$120 max allowance for progressive eyeglass lenses or lens upgrades after your \$65 copay, every 2 years (upgrades limited to progressive lenses only).
- You are responsible for amounts above the benefit limit.

Convenient services

- Access plan information online
- Ability to change your primary care eye doctor by phone or online
- Local professional care

Budget-friendly costs

With your Health Net Ruby Select (HMO) there are no surprises. You'll know your copayments, and your out-of-pocket costs are clearly defined before any exam begins.

Find out more information by calling 1-800-275-4737 (TTY: 711).

Hours are from October 1 to March 31, you can call us 7 days a week from 8 a.m. to 8 p.m. From April 1 to September 30, you can call us Monday through Friday from 8 a.m. to 8 p.m. A messaging system is used after hours, weekends, and on federal holidays or visit visionbenefits.envolvehealth.com.

Contact Information

ID Card

Refer to the phone number on your health plan member ID card for the following services listed below:

24-Hour Nurse Connect

Member Services

Contact us at 1-800-275-4737 (TTY: 711) for following services listed below:

Envolve Health Options (Vision)

Hours are from October 1 to March 31, you can call us 7 days a week from 8 a.m. to 8 p.m. From April 1 to September 30, you can call us Monday through Friday from 8 a.m. to 8 p.m. A messaging system is used after hours, weekends, and on federal holidays.

Vendor Information

Hearing Care Solutions

1-866-344-7756 (TTY: 711)

Health Net Dental California

1-866-249-2382 (TTY: 711)

LogistiCare/Circulation Transportation

1-877-718-4201 (TTY: 1-866-288-3133)

Health Net is contracted with Medicare for HMO plans. Enrollment in Health Net depends on contract renewal.

This information is not a complete description of benefits. Call 1-800-275-4737 (TTY: 711) for more information.

ATENCIÓN: Si habla español, tiene a su disposición servicios gratuitos de asistencia lingüística. Llame al 1-800-275-4737 (TTY: 711)