

# Extra Benefits

As a member of Health Net Healthy Heart (HMO), you get all of these extra benefits included with your plan. Most of these benefits are not covered by Original Medicare and not always offered by other health plans.

Take a look at the next few pages to see what Health Net Healthy Heart (HMO) has to offer!

You can also contact us or our partners with questions or for more information about these services.



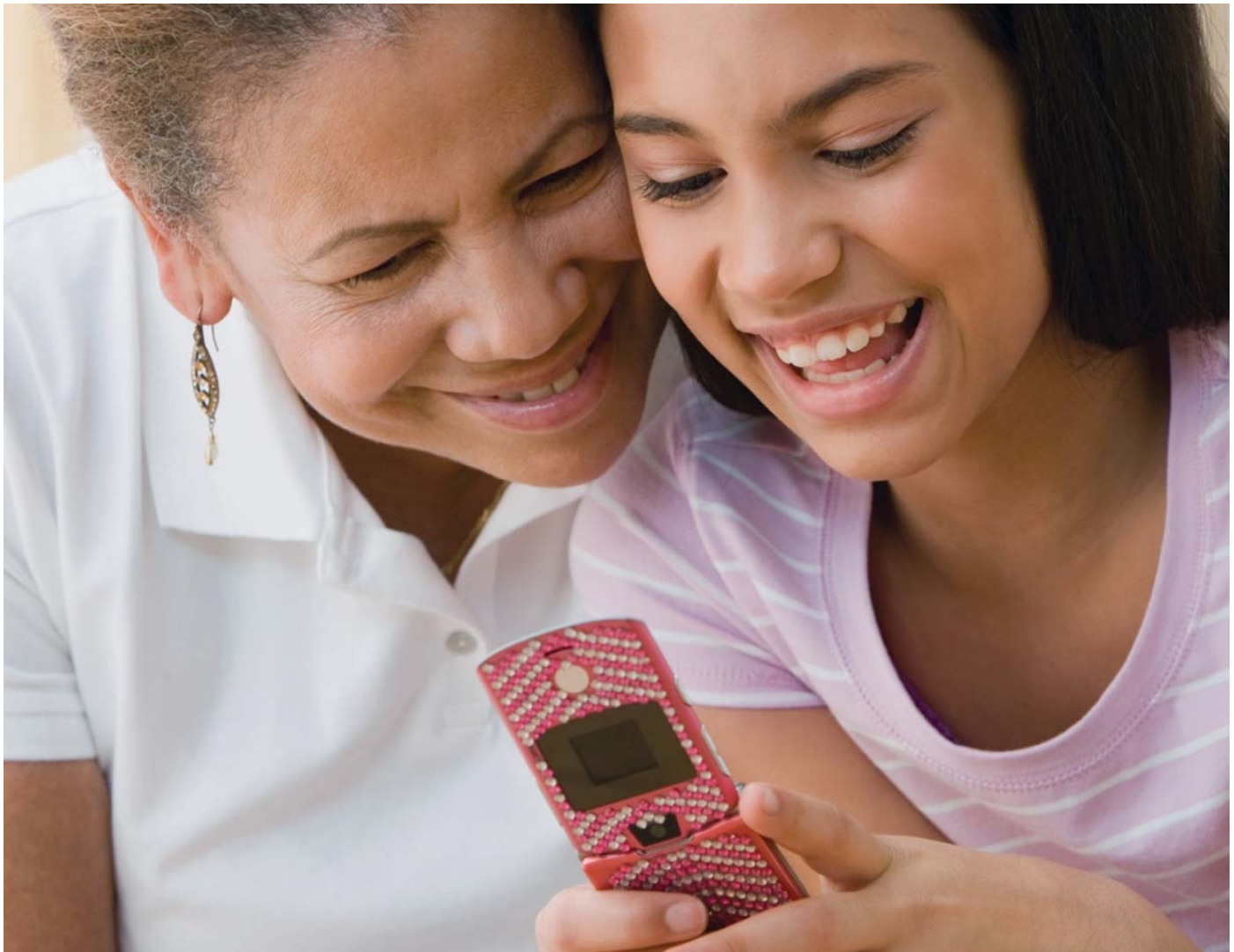
See your Evidence of Coverage for a complete description of plan benefits, exclusions, limitations and conditions of coverage. Plan features and availability may vary by service area.

**Let our nurses help you when you have questions about health concerns or need health information.**

The nurse advice line is available to any member of Health Net Healthy Heart (HMO). The call is free and easy. A caring nurse will listen to your health problem and can help you decide the following:

- If you need to see a doctor
- If it is safe to wait or if you need care right away
- What to do if your symptoms get worse
- What you can start doing at home to feel better

You can call the nurse advice line 24 hours a day, 365 days a year. Refer to the phone number on your health plan member ID card.



## Do you need an eye exam?

### Eye benefits made easy!

Members enrolled in Health Net Healthy Heart (HMO) are entitled to the following:

- One routine (non-Medicare covered) eye exam every year.

### Convenient services

- Access plan information online
- Ability to change your primary care eye doctor by phone or online
- Local professional care

### Budget-friendly costs

With your Health Net Healthy Heart (HMO), there are no surprises. You'll know your copayments, and your out-of-pocket costs are clearly defined before any exam begins.

Find out more information by calling 1-800-275-4737 (TTY: 711)

Hours are from October 1 to March 31, you can call us 7 days a week from 8 a.m. to 8 p.m. From April 1 to September 30, you can call us Monday through Friday from 8 a.m. to 8 p.m. A messaging system is used after hours, weekends, and on federal holidays or visit [visionbenefits.envolvehealth.com](https://visionbenefits.envolvehealth.com).

# Contact Information

## ID Card

Refer to the phone number on your health plan member ID card for the following services listed below:

---

24-Hour Nurse Connect

---

## Member Services

Contact us at 1-800-275-4737 (TTY: 711) for following services listed below:

---

Involve Benefit Options (Vision Services)

---

Hours are from October 1 to March 31, you can call us 7 days a week from 8 a.m. to 8 p.m. From April 1 to September 30, you can call us Monday through Friday from 8 a.m. to 8 p.m. A messaging system is used after hours, weekends, and on federal holidays.

Health Net is contracted with Medicare for HMO plans. Enrollment in Health Net depends on contract renewal.

This information is not a complete description of benefits. Call 1-800-275-4737 (TTY: 711) for more information.

ATENCIÓN: Si habla español, tiene a su disposición servicios gratuitos de asistencia lingüística. Llame al 1-800-275-4737 (TTY: 711)

FLY031078EK00 (6/19)